



Leading in Ventilation Management.

Offering quality, efficiency and consistency

1200ZP

- 12 outputs; 20A/10A @ 240VAC
- 14 Sensor inputs (10 analog and 4 digital)
- Multi Zone capability (up to 9 zones)
- Expansion capable
- Input power 90-265VAC 50/60Hz
- 10.5" w x 12.5" h x 6.25" d

1200ZPVS

This model is the same as the 1200ZP except:

- 10 output channels
- 2 Variable Speed Channels with 20A/1.5HP @ 240VAC or 10A/1HP @ 120VAC rating

- **Round-The-Clock monitoring** of in-house conditions and automatically coordinates the operation of all equipment to maintain the best possible environment for each stage of livestock development.
- **PC Compatibility** and easy-to-use software offers powerful on or remote site capabilities.
- **Revolutionary Static Pressure Control** with fast and accurate vent operation. Intelligent software readjusts the opening based on current conditions. Ramping allows the grower better control over the actual house conditions.
- **Effective Environmental Temperature** control eliminates the confusion over what the livestock is actually experiencing. Sensors measure the temperature, airspeed and humidity and combine them in a copyrighted formula to allow the grower better control over actual house conditions.
- **Shared Sensor Technology™** with up to 14 sensors provides far better measurement of environmental conditions. This allows the grower to run any device using any sensor or group of sensors. Capabilities also include accurate humidity sensing at an affordable price and monitoring of water usage or feeder run-time.
- **High Humidity Cutoff** protects livestock from heat-humidity stress by controlling evaporative cooling based on the heat index (relative humidity plus temperature). Safely operate tunnel houses without the fear of adding too much water in humid conditions.
- **Innovative Control Logic** is an approach to ventilation control that is so advanced it's patented! (patent #5,813,599).



Performance You Can Count On

VENTRA™



LINK Software

Monitor and manage one or multiple buildings from a central computer using the Ventra CS2000 Communication Station.

LINK provides the ability to remotely "call up" a specific house, check current conditions and change control settings right from the computer keyboard. In addition, LINK can use the historical information stored in Ventra's memory to help pinpoint problems and provide a clearer picture of overall performance. Information can be selected and arranged to provide a comparison of environmental conditions in different houses, measure total daily water use, generate temperature and humidity graphs for a specific period and much more.



Ventra™ Features:

- **Multiple Zone Capability** - with up to 9 zones.
- **Shared Sensor technology (SST)** - provides ultimate climate control by controlling any device with any sensor.
- **Effective Environmental Temperature (EET)** - control monitors & adjusts actual temperature settings based on temperature, humidity, air speed and floor type to maintain optimal (age specific) animal comfort.
- **Hot Keys™** - for instant access to set-up menus and operating parameters.
- **ON/OFF/AUTO** - manual override switches on all output channels.
- **User Defined** - output channels with pre-printed supplied label set.
- **Built-In Fuse** - protected relays with 20-amp fuse.
- **Heavy Duty NEMA-4X** - enclosure protects electronics from moisture, dust and chemical for greater reliability and life.
- **Easy Access** - to internal adjustments and wiring with snap open latches.
- **NV Logic** - specifically designed to operate naturally ventilated buildings.
- **Humidity Control** - automatically regulates various devices based on RH or RH and temperature.



VENTRA 1200ZPVS

BUILT TO HIGHER STANDARDS

Don't put yourself at risk with an untested, unproven control. All Ventra Models are listed under one or more of the following testing agencies:

UL CSA CE ETL

No other control can better manage power or naturally ventilate buildings.

Contact your local **VAL-CO** Representative or Distributor for more information on how Ventra Environmental Control Systems can improve feed efficiency and provide healthier animals with lower mortality and greater productivity!

North America:

Phone: 800.99VALCO (800.998.2526)

Fax: (+1) 419-678-2200

E-mail: sales@val-co.com

International:

Phone: (+1) 419-678-8731

Fax: (+1) 419-678-2200

E-mail: intl.sales@val-co.com



Take Control!

The Ventra™ PRO Controller from VAL-CO® provides many options.

VAL-CO® is proud to introduce the Ventra Pro Controller with options that can help to save you time and money.

Features & Benefits:

- **One-Touch Access to Pertinent Information:** Daily high/low temperatures, water usage, feeder run times, etc. all available in one simple menu at the touch of a button.
- **Plug In Relays:** Make it easy to swap parts in the field with minimal downtime.
- **Built-In Assistant:** Shows data points that fall outside of acceptable parameters for quick and easy diagnosis of problems.
- **Multiple Programs:** Stored in one SD card for quick changing of seasonal ventilation parameters.
- **Track Propane Usage:** Quickly see when expenses are climbing, and correct the cause before it's too late.
- **Heater/Curtain Zone Interlock:** Reduce wasted fuel by preventing heaters from turning on if the curtains in the same zone are open by more than 1".
- **Heat Purge:** Heated air holds more moisture, so less air needs to be exhausted to remove moisture, and gentler temperature swing is easier on the animals for improved health.
- **Curtain Exercise Routine:** When hot weather causes curtains to stay open day after day, rodents can begin to build nests inside the curtain folds. The new exercise routine can fully close and open the curtains automatically, which will dump out the nests and prevent damage to your curtains.
- **Outside Temp Influence/High Temp Alarm:** Reduce nuisance alarms during warm weather; high temperature alarm will be adjusted based on high outside temperatures.
- **English or Spanish Language:** Toggle between Spanish or English language menus to help make the controller easily accessible to different workers.

The VAL-CO family of products provides all your equipment needs.

- Complete Housing Systems
- Breeder Systems
- Feeding Systems & Storage
- Watering Systems
- Controllers
- Heating and Cooling
- Fans, Inlets & Chimneys
- Scales
- Cremators



Performance You Can Count On

Deadbolt™ Lightning/Surge Suppressor

Lightning strikes are the leading cause of electronic failures in confinement buildings. Electric lines, telephone lines and data communication lines become antennas when lightning strikes, leading destruction straight to your control. Some electronic controls have limited lightning/surge protection built in to protect against normal stray surges. The Deadbolt Lightning/Surge Suppressors increase the level of protection. Protect your investment! The Deadbolt Lightning/Surge Suppressors stop lightning bolts dead, before they reach your sensitive equipment.



Control Circuit
Lightning/Surge Suppressor



Telephone Line
Lightning/Surge Suppressor



Data Line
Lightning/Surge Suppressor

Call your local **VAL-CO** representative or distributor for more information on these and our other fine products.



Performance You Can Count On

www.val-co.com

North America:
Phone: 800.99VALCO (800.998.2526)
Fax: (+1) 419-678-2200
E-mail: sales@val-co.com

International:
Phone: (+1) 419-678-8731
Fax: (+1) 419-678-2200
E-mail: intl.sales@val-co.com



24" model



Truss Mount

Ceiling Mount



Wall/Post Mount

Move More Air.

Horizontal Airflow Fans

Optimum performance & versatility are standard features of the VAL-CO® Basket Style Horizontal Airflow Fans.

A perfect complement for general purpose air movement in Horticultural and Agricultural applications.

- Heavy-duty PVC coated, welded wire guard screen
- Sanitary white color
- Snap together guard screen for fast removal
- Variable & single speed operation
- Versatile mounting options for most locations
- High efficiency motors & blade

36" model



24" model (profile)



12" model



Model Number	Item Description	Motor Amps	CFM	Volts	Shipping Lbs.	Weight Kgs.
HF12N01	12" Horiz. Air Flow Fan	1/5	2600	115/230	22.0	10.0
HF20N01	20" Horiz. Air Flow Fan	3.6/1.8	6000	115/230	25.0	11.3
HF24N01	24" Horiz. Air Flow Fan	4.6/2.3	8500	115/230	28.0	12.7
HF36N01	36" Horiz. Air Flow Fan	7.0/2.3	11500	115/230	42.0	19.1
HF36N03	36" Horiz. Air Flow Fan	2.4/1.2	11500	230/460 (3Ph-60Hz)	43.0	19.5

NOTE: All above fans are non OSHA, PVC Coated Guard Screen, White

Call your local VAL-CO representative or distributor for more information on these and our other fine products.

North America:

Phone: 800-99VALCO (800-998-2526)

Fax: (+1) 419-678-2200

E-mail: sales@val-co.com

International:

Phone: (+1) 419-678-8731

Fax: (+1) 419-678-2200

E-mail: intl.sales@val-co.com



Performance You Can Count On

www.val-co.com

Maintenance Free Fresh Air Ventilation.

Power-Flo™ Ceiling Inlets

The Fresh Air Ceiling Inlet System from VAL-CO® is the heart of a total ventilation system. Our superior design is cost effective, durable and easy to install and clean.

Design Features

- Operated by a power actuator and regulated by your ventilation control program
- Controls air velocity and volume according to fan speed(s) and temperature for optimum animal comfort
- Unique "Biflo" design allows draft-free air distribution throughout the confinement area
- Reduced fan operation results in added cost savings due to precise, fast and gentle air replacement
- Unique design eliminates heat loss and back drafts

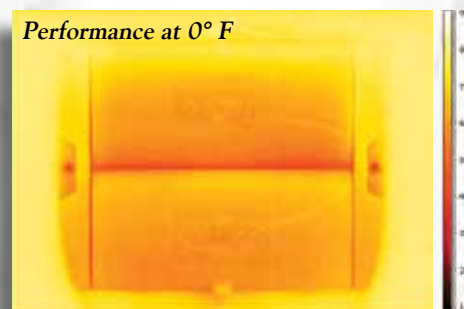
Construction

- Rugged seamless rotationally molded construction meets or exceeds the performance of foam inlets
- Made of tough, non-corrosive polyethylene
- Available in 1400 or 2700 cfm sizes to fit your design needs
- Stands up to high pressure cleaning
- Complete with control cords, hardware and insulstop

Thermal Tested

- The Power-Flo™ Ceiling Inlets demonstrated superior results when tested in a certified laboratory under controlled and monitored conditions over a 60° temperature gradient of -30° F through +30° F.

Performance at 0° F



Specifications

Model	CFM	Rough Opening
1406P	1400	16 7/16" x 23 3/16"
1410P	2700	21 7/16" x 32 15/16"



Performance You Can Count On

www.val-co.com

North America:
Phone: 800-99VALCO (800-998-2526)
Fax: (+1) 419-678-2200
E-mail: sales@val-co.com

International:
Phone: (+1) 419-678-8731
Fax: (+1) 419-678-2200
E-mail: intl.sales@val-co.com



Control the Airflow.

HyperMAX™ Galvanized Butterfly Damper Straight Wall 48" & 54" Fans

Performance You Can Count On

The new line of premium fans and fan accessories from VAL-CO® include state-of-the-art features designed for maximum efficiency and long-lasting performance.

The VAL-CO Family

- Watering Systems
- Feed Bins, Fill Systems
 - Feeders
- Nest & Egg Collection Systems
 - Cage Equipment
 - Brooders & Heaters
 - Evaporative Cooling
- Fans & Other Ventilation
- Whole House Controllers™
 - Cremators
 - Alarms
 - Flooring

Features include:

- Computer design orifice-blade-cone-motor combination assures optimum use of the motor power curve while reducing starting and running amps.
- Heavy duty galvanized steel blades.
- Matching blades and energy-efficient motors provide maximum CFM/watt of electrical power.
- Energy efficient, waterproof motors with sealed ball bearings and thermal overload protection are manufactured to VAL-CO's exacting specifications.
- Motor options include single or three phase motors in 50 Hz or 60 Hz and various operating voltages.
- Unique four-point motor mount design provides minimum air restriction and vibration-free performance.
- Motor mount assembly utilizes a rugged box frame design to improve performance, efficiency, increase motor life and provide quiet operation.
- An auto belt tensioner reduces maintenance.
- VAL-CO's tradition of high quality galvanized steel fan housing & components.
- Full 1" diameter drive shaft, with rust resistant coating, is square keyed for non-slip operation.
- Pre-lubricated industrial grade pillow block bearings are self-aligning, low maintenance and add longer life.

**HyperMAX Fans
are backed by
VAL-CO's
1 year warranty -
see dealer for details.**

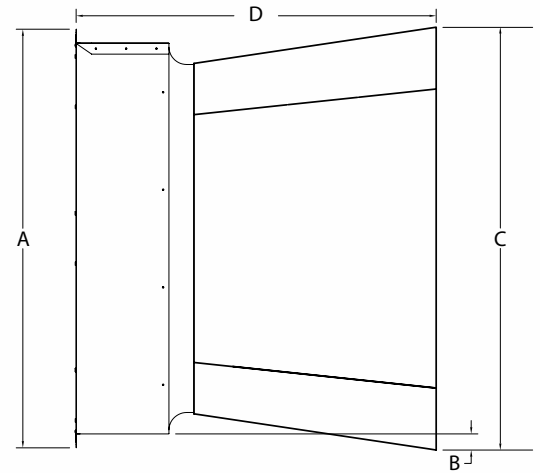


Performance You Can Count On

Our ventilation experts can also assist with retrofitting an existing or designing a new facility for maximum efficiency.

Dimensions for HyperMAX™ Damper Fans

	HyperMAX™	
	48" Fan	54" Fan
"A"	59"	63.63"
"B"	2.5"	4.5"
"C"	60.25"	68.5"
"D"	51"	55.25"



Rough Openings (H x W): **54"** - 60.25" x 60.25" / **48"** - 55.75" x 55.75"

Model Number	HP	Voltage	Hertz	Phase
948320	1.5	230	60	1
954440	1.5	230	60	1
954460	1.5	200-230	60	3
954470	1.5	380	50	3

CFM vs. Static Pressure (Inches WC)

Model Number	0		0.05		0.1		0.15		BESS Test #
	CFM	Cfm/Watt	CFM	Cfm/Watt	CFM	Cfm/Watt	CFM	Cfm/Watt	
948320	25600	21.8	24200	19.8	22700	17.9	20900	16.1	12723
954440	31000	23.8	29500	21.8	27600	19.5	25300	17.2	12708
954460	31900	20.6	30300	18.9	28200	17.1	26100	15.2	10475
954470	30000	25.4	28200	22.8	26100	20.2	23800	17.9	-

NOTE: For International Shipments Only: All fans available as unassembled units by adding "-KD" to the end of the model number.

VAL-CO® Galvanized Fans - Superior Technology, Durability and Value

The Butterfly Damper Fan has been tested and proven. The numbers speak for themselves. High CFM and efficiency ratings make the HyperMAX Damper Fan a top performer.



Call your local **VAL-CO** representative or distributor for more information on these and our other fine products.

North America:

Phone: 800-99VALCO (800-998-2526)

Fax: (+1) 419-678-2200

E-mail: sales@val-co.com

International:

Phone: (+1) 419-678-8731

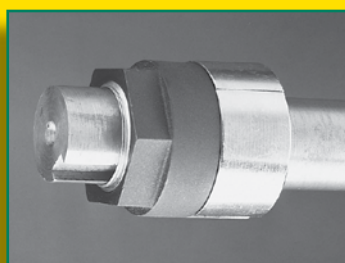
Fax: (+1) 419-678-2200

E-mail: intl.sales@val-co.com

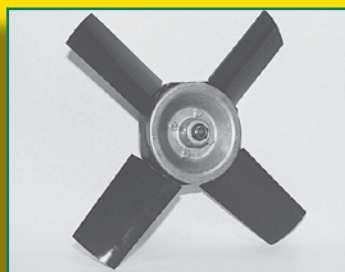




Power Miser Fan Series



TranTorque Fitting locks tight on motor shaft, no set screws to loosen and allows easy change-out of blade and motor



Composite Blades offer multi-wing design, cast aluminum hub and individual replacement blades



Performance You Can Count On

Direct Drive Fans for Performance Second to None.

Built for Life. Built to Last.

Engineered for a unique combination of aerodynamic detailing with high efficiency, long-life and worry-free performance

12" to 24" Direct Drive Fans

Power Miser Fan Series

Features:

- Matching blades and energy-efficient motors provide maximum CVM/watt of electrical power
- Unique four-point stainless steel motor mount design provides minimum air restriction and vibration-free performance
- Custom 230 volt PSC motors with 2 or 3 wire variable speed control option
- Corrosion-resistant molded fiberglass construction
- Poly discharge cones for ultimate performance
- Self-slope design sheds moisture
- PVC coated guard screens
- PVC shutters are impact resistant, self-sealing with extruded PVC frames
- Optional cast aluminum blades, winter doors and dual-voltage motors on most models
- Optional white or black colors on fans and PVC louvers

Fiberglass Flush-Mount Direct Drive Fans

FW Fan Series

Features:

- Matching blades and energy-efficient motors provide maximum CFM/watt of electrical power
- Unique four-point stainless steel motor mount design provides minimum air restriction and vibration-free performance
- Sealed lifetime lubricated motors with built-in thermal overload protection
- One-piece, corrosion-resistant molded fiberglass construction
- Sloped wall housing design for easy cleaning and complete condensation drainage
- Interior flush-mount, self-trimming design eliminates obstructions in alleyways
- PVC shutters are impact resistant, self-sealing with extruded PVC frames
- PVC coated guard screen
- Optional wind diverters available

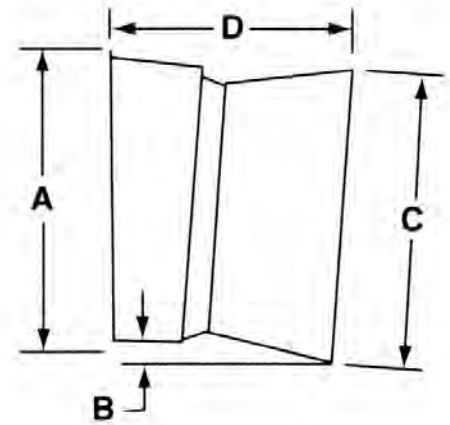


FW Fan Series

Our ventilation experts
can also assist with
retrofitting an existing or
designing a new facility for
maximum efficiency.

Dimensions for Power Miser Fans

	PM-12"	PM-16"	PM-21"	PM-24"
"A"	22.75"	27.25"	31"	33"
"B"	4.75"	5.5"	5.5"	5.5"
"C" Long Cone	18.5"	24"	28.75"	32"
"C" Short Cone	N/A	N/A	N/A	N/A
"D" Long Cone	32"	34"	35"	38"
"D" Short Cone	N/A	N/A	N/A	N/A
Rough Opening	18.5"x 18.5"	23"x 23"	26.5"x 26.5"	29"x 29"



Models

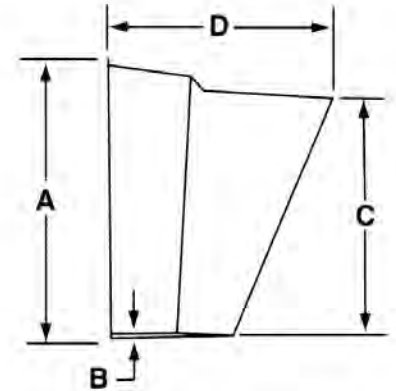
CFM vs. Static Pressure (Inches WC)

Model	Blade	HP	Voltage	HZ	Phase	0		.05		.10		.15		BESS #
						CFM	Cfm/Watt	CFM	Cfm/Watt	CFM	Cfm/Watt	CFM	Cfm/Watt	
PM12W140MPA	Composite	1/4	230	60	1	1933	10.2	1855	9.7	1779	9.1	1691	8.6	95319
PM16W140MPA	Composite	1/4	230	60	1	3140	14.0	3040	13.2	2920	12.3	2790	11.4	95327
PM21W190LPA	Composite	1/2	230	60	1	5550	14.0	5350	13.1	5170	12.4	4960	11.6	95325
PM24W210MPA	Composite	1/2	230	60	1	7000	14.9	6670	13.9	6310	13.0	5930	12.1	01304

Note: Bess Labs website is www.bess.uiuc.edu

Dimensions for FW Fans

	FW-12"	FW-16"	FW-20"	FW-24"
"A"	20"	22.75"	26.75"	30.25"
"B"	.5"	.5"	.75"	2.5"
"C"	12.25"	16.75"	20.75"	24.5"
"D"	25.5"	25.5"	23"	24.5"
Rough Opening	16"x 16"	19"x 19"	22.5"x 22.5"	26.5"x 26.5"



Models

CFM vs. Static Pressure (Inches WC)

Model	Blade	HP	Voltage	HZ	Phase	0		.05		.10		.15		BESS #
						CFM	Cfm/Watt	CFM	Cfm/Watt	CFM	Cfm/Watt	CFM	Cfm/Watt	
FW12W270MPA	Composite	1/4	115/230	60	1	1682	7.3	1608	6.9	1517	6.4	1393	6.0	—
FW16W270MPA	Composite	1/4	115/230	60	1	3023	8.8	2911	8.4	2793	8.0	2664	7.7	—
FW20W190LPA	Composite	1/2	230	60	1	4613	10.0	4479	9.7	4320	9.3	4154	8.8	02343
FW24W210MPA	Composite	1/2	230	60	1	5515	11.9	5188	11.4	4802	10.6	4302	9.7	02345

Note: Bess Labs website is www.bess.uiuc.edu



Call your local **VAL-CO** representative or distributor for
more information on this and other fine quality products.

North America:
Phone: 800-99VALCO (800-998-2526)
Fax: (+1) 419-678-2200
E-mail: sales@val-co.com

International:
Phone: (+1) 419-678-8731
Fax: (+1) 419-678-2200
E-mail: intl.sales@val-co.com

Incredibly Durable.

HyperMAX™ Fiberglass Belt Drive Fans – 36" & 50"

High Performance - Maximum Value

The tested and proven designs of VAL-CO® deliver superior performance and value.

Superior Design of the Motor and Motor Mount

- The HyperMAX motor mount and drive assembly utilizes a rugged box frame design to improve performance, efficiency, increase motor life and provide quiet operation.
- An auto belt tensioner reduces maintenance.
- Standard with auto tensioner or reverse drive is available.
- Energy efficient, waterproof motors with sealed ball bearings and thermal overload protection are manufactured to VAL-CO's exacting specifications.
- Motor options include single or three phase motors in 50 Hz or 60 Hz and various operating voltages.
- Unique four-point, galvanized or stainless steel motor mount design provides minimum air restriction and vibration-free performance.

Engineered Blade Design

- Computer design orifice-blade-cone-motor combination assures optimum use of the motor power curve while reducing starting and running amps.
- Blade options include rust proof stainless steel, cast aluminum or galvanized.
- Matching blades and energy-efficient motors provide maximum CFM/watt of electrical power.

Durable Construction

- Corrosion-resistant, high quality housing construction of molded fiberglass providing superior durability and long life.
- Performance enhancing exhaust cones are available in fiberglass or poly.
- Slant wall design provides reduced weather intrusion, easy cleaning, water drainage and improved performance.
- Full 1" diameter drive shaft, with rust proof coating, is square keyed for non-slip operation.
- Pre-lubricated industrial grade pillow block bearings are self-aligning, low maintenance and add longer life.
- High quality shutters are available in aluminum or black or white PVC.
- Tough rust proof shutter clips are designed with stay-put features.
- Stainless steel self-locking fasteners are corrosion resistant.
- Energy doors are available.

**HyperMAX Fans
are backed by
VAL-CO's
long-life warranty -
see dealer for details.**



Motor mount and drive assembly utilize a rugged box frame design to increase motor life.



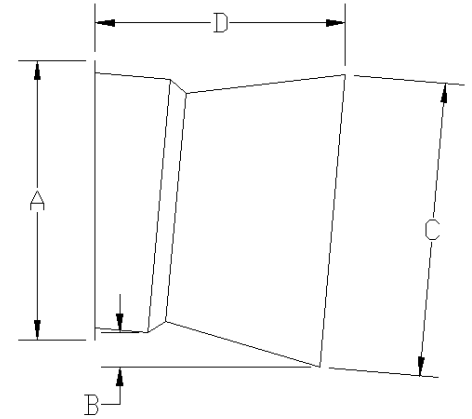
Performance You Can Count On

Our ventilation experts
can also assist with
retrofitting an existing or
designing a new facility for
maximum efficiency.

Dimensions for HyperMAX™ Fiberglass Fans

	36"	50"
"A"	48.5"	62.25"
"B"	7"	8.5"
"C" Long Cone	50.25"	64.5"
"C" Short Cone	N/A	59"
"D" Long Cone	47"	49.25"
"D" Short Cone	N/A	39.25"

Rough Openings: 36" Fans = 44 1/2" x 44 1/2"
(H x W) 50" Fans = 58" x 56"



36" Models

CFM vs. Static Pressure (Inches WC)

Model	Blade	HP	Voltage	HZ	Phase	0.05		0.10		0.15		0.20		BESS #
						CFM	Cfm/Watt	CFM	Cfm/Watt	CFM	Cfm/Watt	CFM	Cfm/Watt	
HPM36W340LGAT	Galvanized	1-1/2	230	60	1	15100	16.4	14300	14.7	13400	13.1	12500	11.7	06045
936310	Steel	1-1/2	230	60	1	15700	12.7	14900	11.9	13990	10.8	13060	9.8	12716
HPM36W340LNAT	Galvanized	1-1/2	230	60	1	14330	12.9	13760	12.2	13340	11.6	12740	10.9	12718
HPM36W600LNAT	Galvanized	1	230/460	60	3	13630	12.8	13000	11.9	12540	11.3	11860	10.5	12719
HPM36W760MGAT	Galvanized	1/2	115/230	60	1	12200	19.6	11000	16.4	9600	13.7	5700	8.0	06046
HPM36W760MNAT	Alum	1/2	115/230	60	1	10500	19.5	9500	17.1	8600	15.1	7800	13.7	06047

50" Models

CFM vs. Static Pressure (Inches WC)

Model	Blade	HP	Voltage	HZ	Phase	0.05		0.10		0.15		0.20		BESS #
						CFM	Cfm/Watt	CFM	Cfm/Watt	CFM	Cfm/Watt	CFM	Cfm/Watt	
HPM50W340MCAT	Alum	1-1/2	230	60	1	23800	22.1	22300	20.0	20500	17.8	18700	15.8	10470
HPM50W340MNAT	Alum	1-1/2	230	60	1	23800	22.1	22300	20.0	20500	17.8	18700	15.8	10470
HPM50W340MSAT	Steel	1-1/2	230	60	1	23600	19.8	22200	18.0	20700	16.2	19000	14.6	12710
HPM50W340NCAT	Alum	1-1/2	230	60	1	21000	22.1	19200	19.7	16900	17.2	13100	13.5	12714
HPM50W420LCAT	Alum	1-1/2	115/230	60	1	24300	18.9	22900	17.4	21200	15.9	19200	14.2	12712
HPM50W420LNAT	Alum	1-1/2	115/230	60	1	24300	18.9	22900	17.4	21200	15.9	19200	14.2	12712
HPM50W600MCAT	Alum	1	230/460	60	3	24400	23.4	22600	20.9	20500	18.4	18100	15.9	02242
HPM50W600MNAT	Alum	1	230/460	60	3	24400	23.4	22600	20.9	20500	18.4	18100	15.9	02242
HPM50W650LNAT	Alum	1-1/2	230/460	60	3	27400	19.6	25900	18.1	23700	16.4	21100	14.1	02244

NOTES:

- ¹ - Each @ .05 Static Pressure and 230Volts/60Hz
- ² - Bess Labs Website is www.bess.uiuc.edu
- ³ - Fan tested with a short cone

* - Blade / Motor Mount Material Combo

- G = Galvanized Blade & Motor Mount
- S = Stainless Steel Blade & Motor Mount
- C = Cast Aluminum Blade & Stainless Steel Motor Mount
- N = Cast Aluminum Blade & Galvanized Motor Mount
- P = Composite Blade & Stainless Steel Motor Mount



Performance You Can Count On

www.val-co.com

Call your local **VAL-CO** representative or distributor for
more information on these and our other fine products.

North America:

Phone: 800-99VALCO (800-998-2526)

Fax: (+1) 419-678-2200

E-mail: sales@val-co.com

International:

Phone: (+1) 419-678-8731

Fax: (+1) 419-678-2200

E-mail: intl.sales@val-co.com



36"-48"-54" Fans Deliver High Performance.

HyperMAX™ Galvanized Fans

High Performance - Maximum Value

Break-through engineering by VAL-CO® provides fans with a superior combination of CFM performance and CFM per watt.

Superior Design of the Motor and Motor Mount

- The HyperMAX motor mount and drive assembly utilizes a rugged box frame design and the highest quality galvanized steel construction for quiet operation, durability and long motor life.
- A standard belt tensioner reduces maintenance.
- Energy efficient, waterproof motors with sealed ball bearings and thermal overload protection are manufactured to VAL-CO's exacting specifications.
- Motor options include single or three phase motors in 50 Hz or 60 Hz and various operating voltages.
- Unique four-point, galvanized motor mount design provides minimum air restriction and vibration-free performance.

Engineered Blade Design

- Computer designed orifice-blade-cone-motor combination assures optimum use of the motor power curve while reducing starting and running amps.
- Die formed spider twist blades are dynamically spin-balanced.
- Matching blades and energy-efficient motors provide maximum CFM/Watt of electrical power.

Durable Construction

- Computer-matched air diffuser cone increases airflow without increased horsepower.
- Slant wall design provides reduced weather intrusion, easy cleaning, water drainage and improved performance.
- Full 1" diameter drive shaft, with corrosion resistant coating, is square keyed for non-slip operation.
- Industrial grade bearings are sealed, pillow-blocked, keyed, greasable and self-aligning.
- High quality shutters are available in black or white PVC.
- Tough corrosion resistant shutter clips are designed with stay-put features.
- Zinc plated self-locking fasteners are corrosion resistant.
- Corrosion resistant fan guard.



The orifice, blade, cone and motor combination optimizes the use of the motor's power curve.



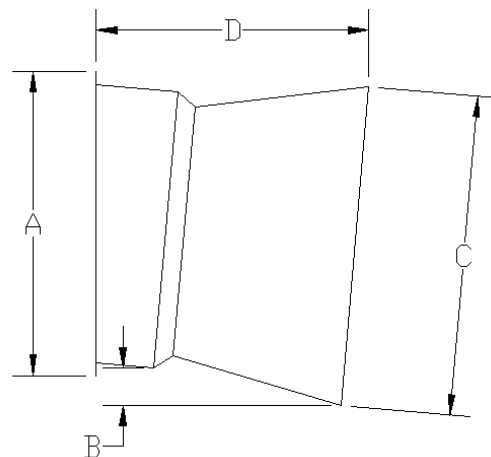
Performance You Can Count On

**HyperMAX Fans
are backed by
VAL-CO's
1 year warranty -
see dealer for details.**

Our ventilation experts
can also assist with
retrofitting an existing or
designing a new facility for
maximum efficiency.

Dimensions for HyperMAX™ Galvanized Fans

	HyperMAX™ Galvanized		
	54" Fan	48" Fan	36" Fan
"A"	61"	59.5"	47.5"
"B"	10"	8.75"	8.5"
"C"	69"	61"	49"
"D"	51.5"	50.5"	47.5"



Rough Openings (H x W):

54" - 60.25" x 60" / 48" - 55.5" x 55.5" / 36" - 44.5" x 43.5"

Model Number	Size	HP	Volts	Hertz	Phase
936150	36"	0.5	115/230	60	1
936290	36"	1.0	190/380	50	3
948200	48"	1.0	230	60	1
954350	54"	1.5	230	60	1
954310	54"	1.5	200-230/460	60	3
954400	54"	1.5	380	50	3

CFM vs. Static Pressure (Inches WC)

Model Number	0.00		0.05		0.10		0.15		BESS Test #
	CFM	CFM/Watt	CFM	CFM/Watt	CFM	CFM/Watt	CFM	CFM/Watt	
936150	12,643	23.0	11,660	19.8	10,752	17.4	9,461	14.5	07302
936290	13,030	13.9	12,220	12.9	11,460	11.6	10,650	10.7	-
948200	25,500	22.4	24,400	20.7	23,200	19.0	21,600	17.2	12704
954350	30,600	22.5	29,200	20.8	27,600	18.9	25,700	17.1	10480
954310	-	-	30,600	20.3	28,900	18.3	26,900	16.5	05124
954400	30,460	19.2	29,160	17.8	27,500	16.2	25,600	14.7	-

NOTE: For International Shipments Only: All fans available as unassembled units by adding "-KD" to the end of the model number.

Call your local **VAL-CO** representative or distributor for
more information on this and other fine quality products.

North America:

Phone: 800-99VALCO (800-998-2526)

Fax: (+1) 419-678-2200

E-mail: sales@val-co.com

International:

Phone: (+1) 419-678-8731

Fax: (+1) 419-678-2200

E-mail: intl.sales@val-co.com



Performance You Can Count On

www.val-co.com

Fresh Ideas in Ventilation Technology.

An Investment In Value

Because your future depends on the health of your livestock, the quality of their environment can't be compromised – especially where ventilation and air quality are concerned. Even your equipment and buildings benefit from a ventilation system you can depend on. That's why behind the healthiest herds, flocks and profitable operations, you'll find superior ventilation products manufactured by VAL-CO®, the agribusiness ventilation system pioneer.

Automatic Air Replacement Fresh Air Inlets

The heart of a total ventilation system

Design Features:

- Completely automatic for low maintenance air distribution year round – set them once and forget about them
- Automatically controls air velocity and volume according to fan speed, confinement conditions and prevailing weather
- Unique "Biflo" design allows draft-free air distribution through the confinement area
- Air replacement is gentle, even and fast – reducing the amount of fan operation
- Counter weighted valve assemblies automatically close when fans stop – eliminating heat loss and back drafts
- Inlet openings can be minimized or even closed during severe weather with the VAL-CO "Lock Tab System"
- Optional coating protects valve from power washing damage; standard on Power-Flo Inlet

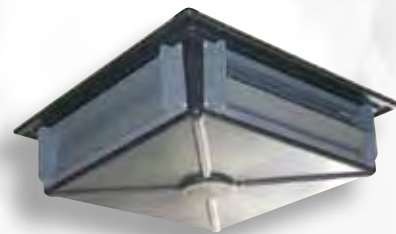


Quad Flo

The Quad Flo is a traditional four-way negative pressure ceiling inlet, which is assembled from four single directional inlets.

Design Features:

- Single directional inlets are manually adjusted to direct air along the ceiling, toward the floor or closed
- Designed to deliver 1700 cfm at 0.15 in of water
- During minimum ventilation it will deliver 500 cfm at 0.05 in water
- PVC mounting frame, 18 attic sleeve and one inch polystyrene insulation board
- Made of UV stabilized polystyrene



Model	CFM	Rough Opening
I306*	1200	12-7/8"x22-5/8"
I310*	2400	16-1/2"x33-3/4"

* When ordering with the clad-covered valve add "C" behind the model number

Construction:

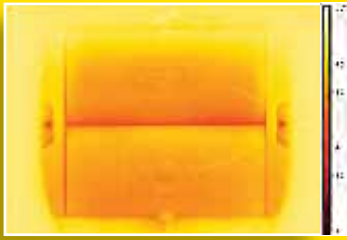
- One-piece single molded construction of tough, corrosion-resistant rigid polystyrene
- Durable, long lasting and aesthetically pleasing
- Available in sizes to fit your needs: 1200, or 2400 cfm per unit
- Easy to install
- Low maintenance

Model	CFM	Rough Opening
I320	1700	29"x29"



Performance You Can Count On

Model	CFM	Rough Opening
1406P	1400	16-7/16"x23-3/16"
1410P	2700	21-7/16"x32-15/16"



Performance at 0° F

Thermal Tested:

The Power-Flo Ceiling Inlets demonstrated superior results when tested in a certified laboratory under controlled and monitored conditions over a 60° temperature gradient of -30° F through 30° F.

Model	Size
R700	24" Chimney
R710	36" Chimney

Low Maintenance Fresh Air Ventilation Power-Flo Ceiling Inlets



The Fresh Air Ceiling Inlet System from VAL-CO® is the heart of a total ventilation system. Our superior design is cost effective, durable and easy to install and clean.

Design Features:

- Operated by a power actuator and regulated by your ventilation control program
- Controls air velocity and volume according to fan speed(s) and temperature for optimum animal comfort
- Unique "Biflo" design allows draft-free air distribution throughout the confinement area
- Reduced fan operation results in added cost savings due to precise, fast and gentle air replacement
- Unique design eliminates heat loss and back drafts

Construction:

- Rugged seamless rotationally molded construction meets or exceeds the performance of foam inlets
- Made of tough, non-corrosive polyethylene
- Available in 1400 or 2700 cfm sizes to fit your design needs
- Stands up to high pressure cleaning
- Complete with control cords, hardware and insulstop

Natural Flow Chimneys Consistent and Precise Control

Design Features:

- High R value eliminates condensation and saves energy
- 1" insulated, mechanical operating damper allows "air by design" exhaust
- One-piece construction reduces assembly & installation set-up time
- Self-squaring construction
- Top and bottom flange provide structural integrity
- Tri-fold design
- Easy installation

Construction:

- Attractive one-piece molded polyethylene chimney dome
- Sturdy 10 gauge structural aluminum dome mounting brackets
- White insulated UV resistant surfaces
- Operating cable kit included
- Rust-resistant hardware



Call your local VAL-CO representative or distributor for more information on these and our other fine products.

North America:

Phone: 800-99VALCO (800-998-2526)

Fax: (+1) 419-678-2200

E-mail: sales@val-co.com

International:

Phone: (+1) 419-678-8731

Fax: (+1) 419-678-2200

E-mail: intl.sales@val-co.com



Performance You Can Count On

www.val-co.com